

Instruction Sheet

Follow these instructions to convert the JIB cover bracket to the BIB cover bracket.

Subject: JIB-BIB Bracket Conversion Instructions

03/06/2023

1. Using wire snips, carefully cut the corners of the existing bushing (see Figures 1 and 2). **NOTE: Use caution to avoid damaging the hose.**
 2. Push down on the bushing tab towards the hose and up through the bracket (see Figures 3 and 4).
 3. Snip any remaining parts to allow the bushing to be removed from the bracket (see Figures 5 and 6).
 4. Snip any remaining parts to open and remove the bushing from the hose (see Figures 7 and 8).
- Continued on the next page.**



Figure 1



Figure 2



Figure 3



Figure 4

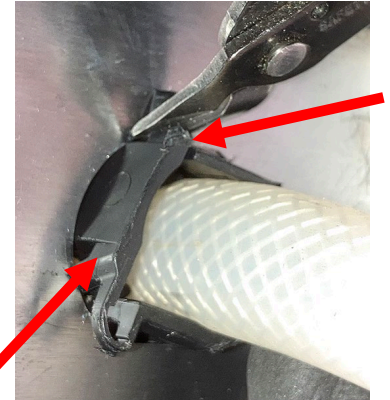


Figure 5



Figure 6



Figure 7

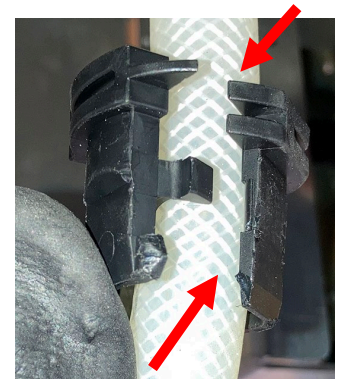


Figure 8

- Slide the metal bracket over the pickup fitting to remove (see Figure 9).

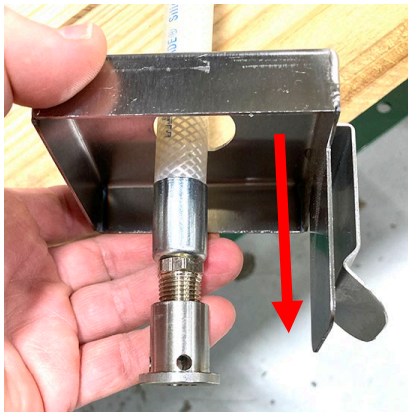


Figure 9

- Attach the new bushing to the hose approximately 14 3/4" (37cm) from the bottom of the pick-up fitting to the top of the bushing (see Figure 10).

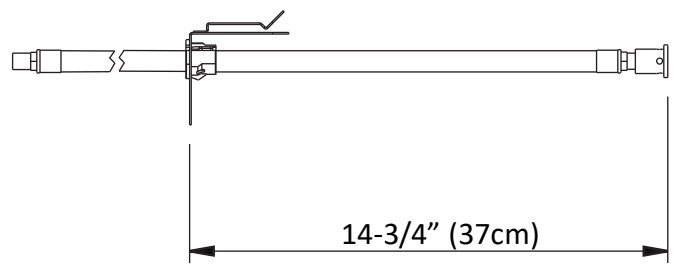


Figure 10

- Ensure the bushing is snapped and locked (see Figure 11).
- Slide the new BIB bracket cover over the pick-up fitting with the clip facing down (see Figure 12).

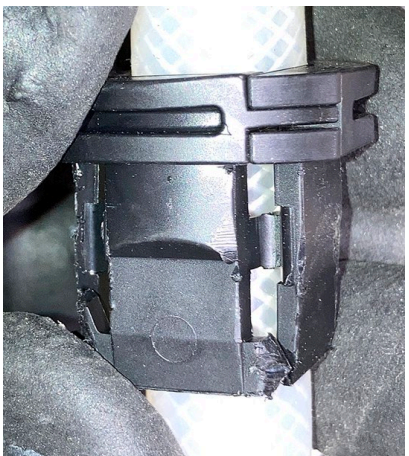


Figure 11

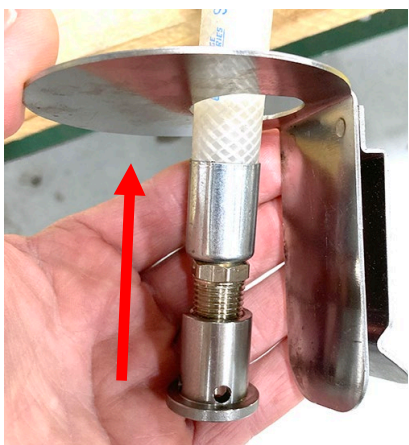


Figure 12

- Insert the bushing with the bottom hinge into the bracket first as shown (see Figure 13).
- Rotate the bushing clockwise 90° until the flat side of the bushing matches up with the flat side of the bracket (see Figure 14).

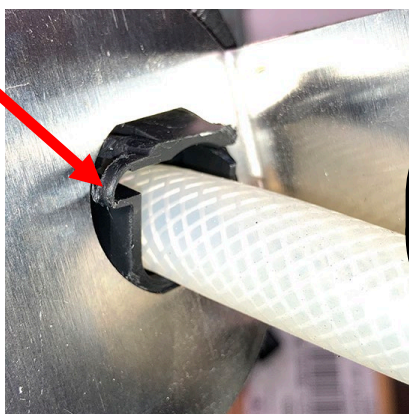


Figure 13

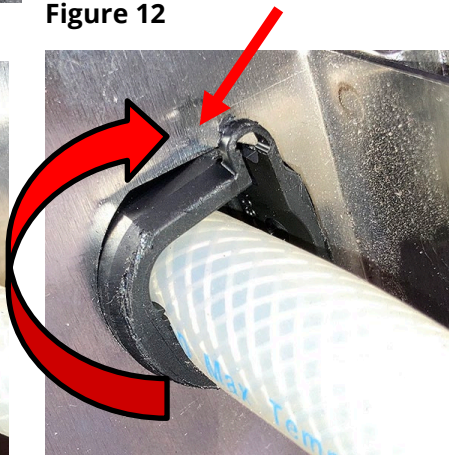


Figure 14

- Push the bushing down fully into the BIB bracket until its fully seated (see Figure 15).



Figure 15